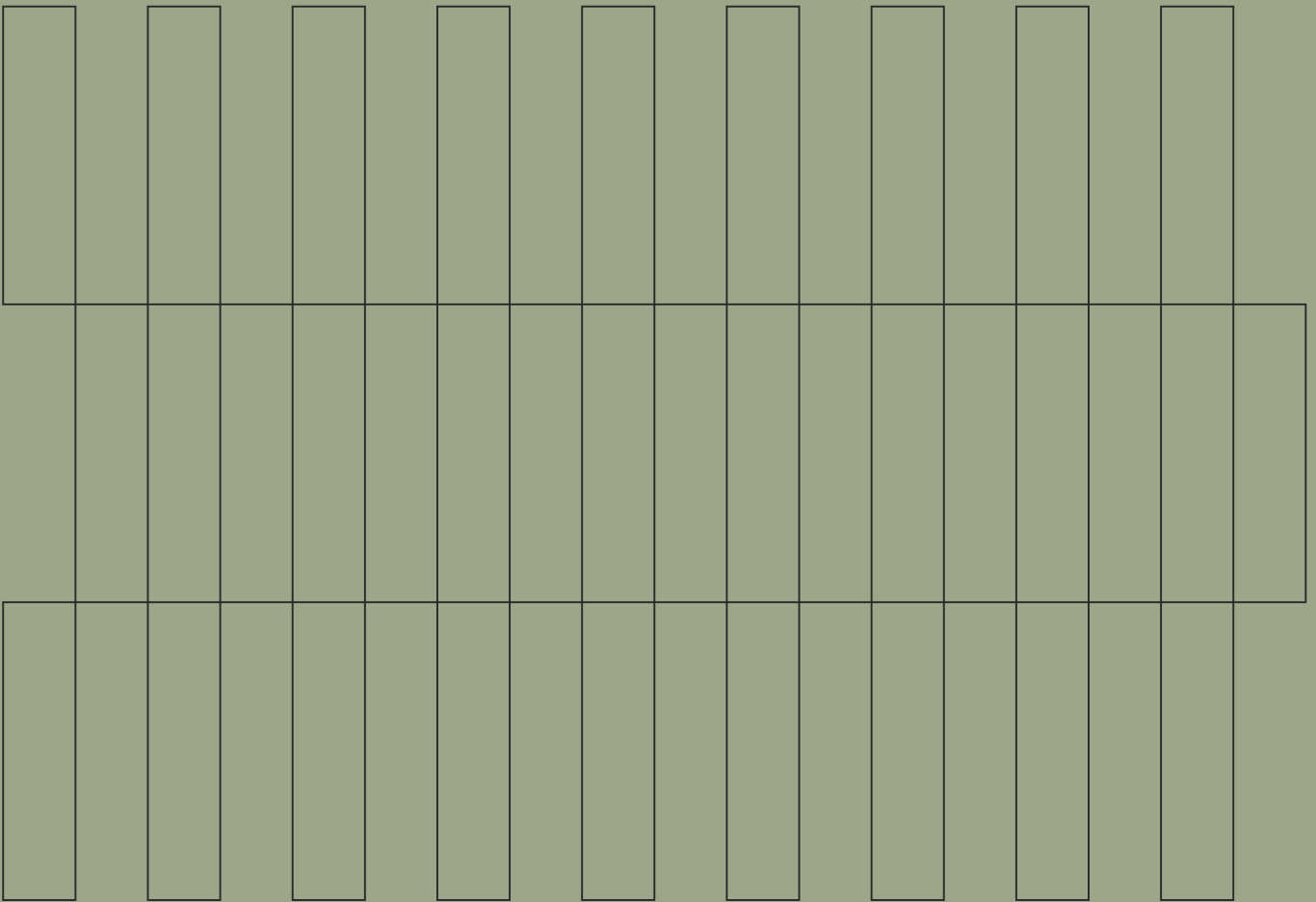


- Timber
- Aluminium
- Concrete



Alu Seleкта Channel

Installation Guide

Product description

Modinex Alu Selekt Channel and Castellation is an innovative exterior cladding product made from highly durable solid extruded aluminum. This non-combustible cladding looks just like timber and can be alternated as a sustainable option. Eco-friendly, low maintenance and incredibly durable, it's ideal for high rises and bushre rated areas designed for ease of installation.

Colours/Finishes

— MXDURA

The MX Dura timber look finish is a next-generation signature double baked powder coat timber grain finish with a 3D grain, 25-year structural warranty and 15-year fading warranty for internal and external use.



— MXSUBLIMATION

The MX Sublimation timber look veneer finish is only suitable for internal use offering a 10-year structural warranty. Also known as sublimation.



Solid Powder Coat Colours

*All Interpon or Dulux standard colours are available.

— ALPHA

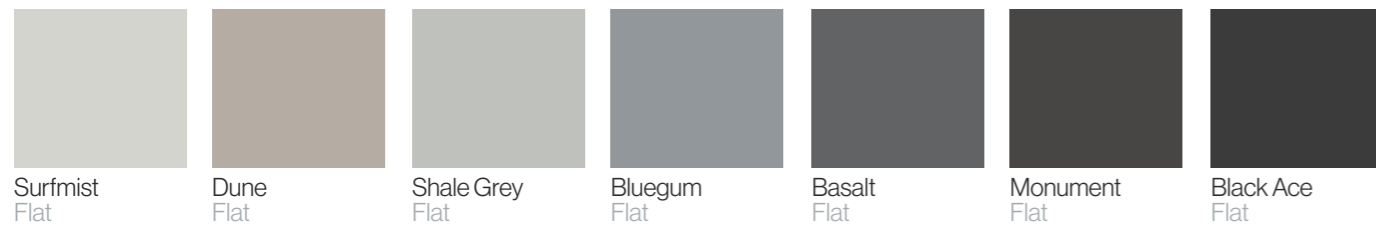
The Alpha solid colour range is a collection of on trend solid colours, delivered with warranty grade advanced super durable polyester thermosetting powder.



*All Interpon or Dulux standard colours are available.

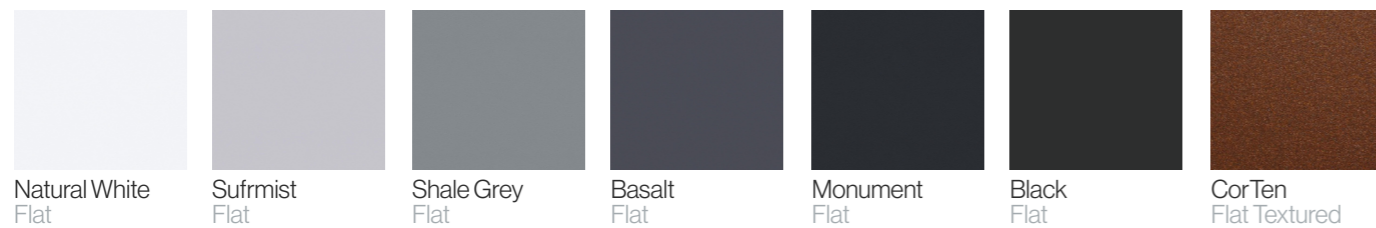
— CHARISMA

The Charisma™ flat matt range features contemporary, solid colours in a flat matt finish for a subtle and sophisticated look, delivered with warranty grade advanced super durable polyester thermosetting powder.



— STRUTTURA

The Struttura Range is a collection of popular, highly mar and scuff resistant textured finishes built to protect, delivered with warranty grade advanced highly durable polyester thermosetting powder.



*All Interpon or Dulux standard colours are available.

— METTALICO

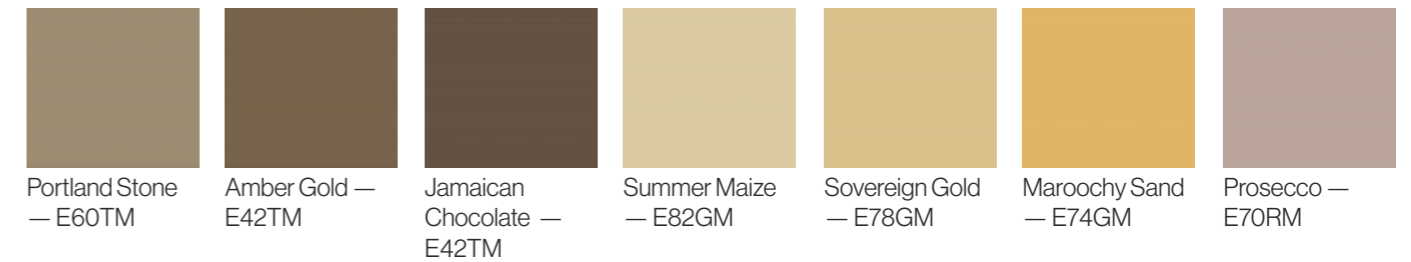
The Metallico anodised look range is a collection of unique anodised look finishes, designed to subtly change in appearance as light conditions after in the day, delivered with warranty grade advanced super durable polyester thermosetting powder.



Anodised Colours

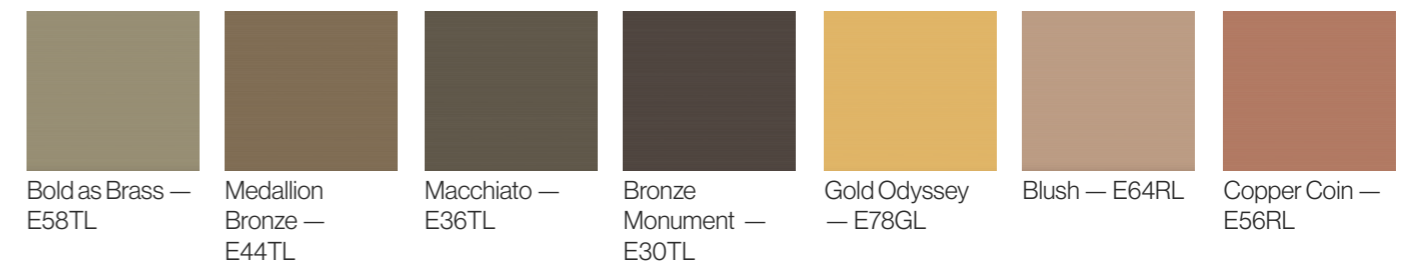
— MATT

The traditional sophisticated matt lustre (10% Gloss).



— ILLUSTRO

Best of both, this hybrid provides an elegant look and feel (30% Gloss).



— BRIGHT

A brilliant finish that makes your product stand proud (80% Gloss).

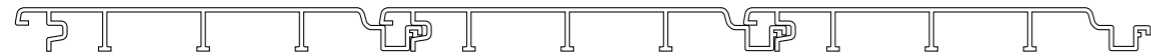




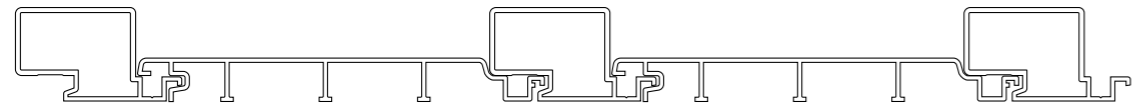
DECLARATION: Please check sustainability to your project to your professional endorsed specifier.
Not to be used on Class 2 to 10 structures over 20 meters in height as a continuous facade without sign off from structural and fire engineer.

General information, profile dimensions, calculating the required quantity and guidelines

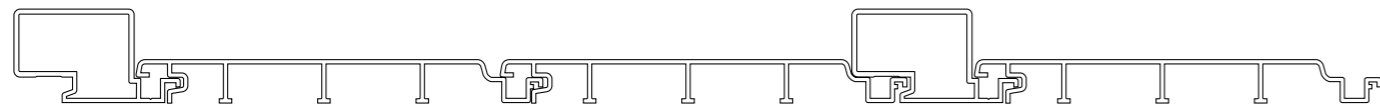
The scope of this installation covers all installation variants of facade cladding, including soffits



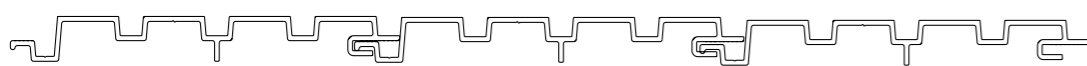
Alu Selektta Groove Profile Cladding - Option 1



Alu Selektta Batten Profile Cladding - Option 2



Alu Selektta Batten Profile Cladding - Option 3



Alu Selektta Castellation Profile Cladding - Option 4

Calculating required quantity (calculation values exclude cutting waste)

	Coverage width	Standard lengths	Required quantity/m ² Facade profile	Required quantity/m ² Galvanised screws 3.9 x 15 mm
Modinex Alu Selektta Channel Cladding at max. fastening spacing = 625mm				
Alu Selektta Channel	155 mm	5,400 mm	6.45 Linear m	0.3 pcs.
Alu Selektta Castellation	190 mm	5,400 mm	NIL	103 pcs.

Sub-framework of facade cladding

Typical top hat spacing is 625mm. Increased wind suction at the edge areas of the building walls must be considered when planning the sub-framework. The fastening spacing of the Alu Selektta profiles must be reduced to max. 300 mm in these areas; additional support battens must be provided as necessary.

Installation lengths

For installation lengths is 5400mm as set lengths. Expansion joints are dependent on local temperature fluctuations.

Wind loadings

This is a simplified form or general rule of thumb for wind loadings. The product has been tested and results reported by Sum mermore Pty Ltd. to the requirements of:

Generic Structural Design Certificate

(supplied by summermores engineering – refer to the Alu Selektta Channel warranty)

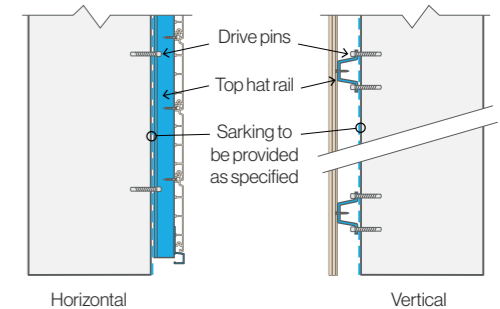
The Alu Selektta Channel is design certified and complies with the following provisions of the building act 1993, Building regulations 2018 or Nation Construction Code.

Act, Regulation or NCC	Section, Regulation, Part, Performance Requirement or Other Provision
AS/NZS1170.0: 200 2	Structural Design Actions—General Principles
AS/NZS1170.1: 2002	Structural Design Actions—Permanent, Imposed & Other Actions
AS/NZS1170.2:2011	Structural Design Actions—Wind Actions
AS/NZS1664. 1:1:97	Aluminium Structures—Limit State Design
AS/NZS1664.2: 1997	Aluminium Structures—Allowable Stress Design

Important Building Design Notes:

- The supporting wall must be watertight and correct flashings used in the event of any water penetration i.e. severe storms
- Refer to installation instructions for joint options
- Galvanised mild steel top hats are recommended with a minimum of 0.9mm thick G550 pull out capacity.
- Suggest drive pin / fixings for top hat to concrete or blockwork substrate to engineer specifications.
- Always confirm with a registered structural engineer.

Alu Selektta Channel Cladding fix to top hat sections per engineer specifications.



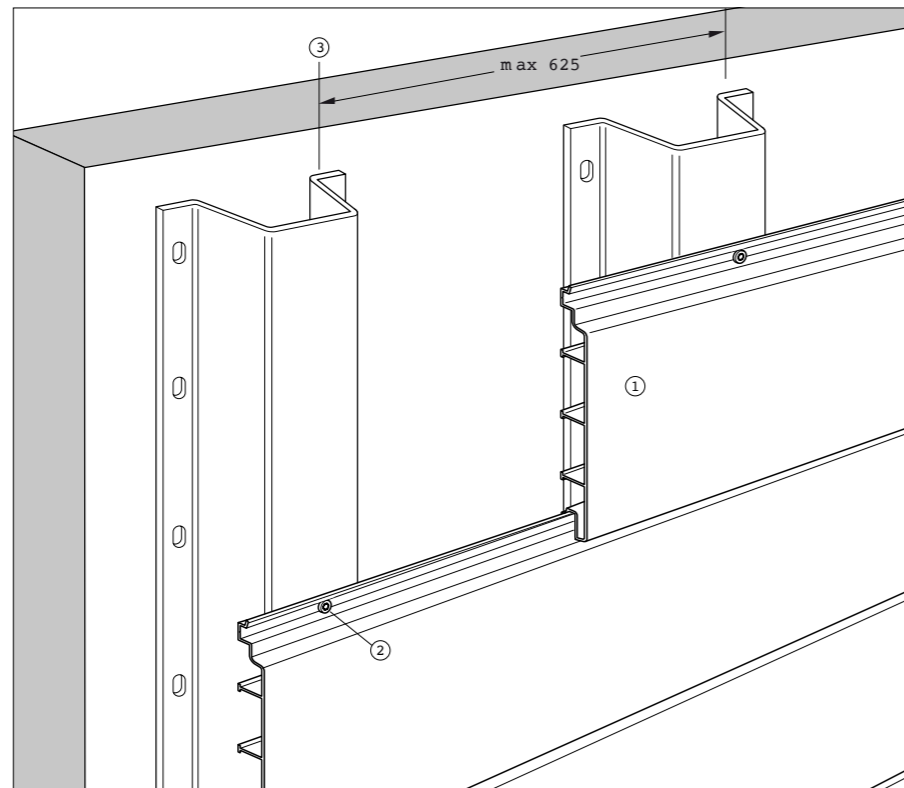
Notes:

The Building Design Engineer is to provide the design zones relating to Local Pressure requirements of AS/NZS 1170.2:2011 CL5.4.4.

The wood decors are equivalent to natural wood surfaces, meaning that different grain textures are possible within a single shipment (plain and/or mottled). Unfortunately, sorting at the factory is not possible! In order to obtain a uniform overall finish, we recommend considering this fact and, for example, laying out the façade profiles before starting with the installation.

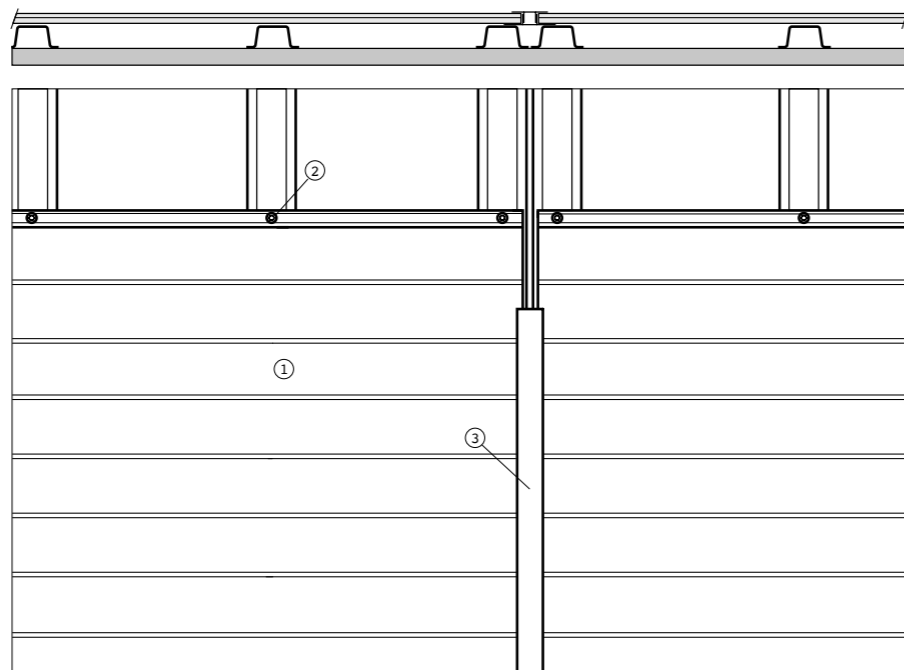
Horizontal Installation

- Alu Selekt facade profiles
- 8-18x16 Metal Self Tapping Screw (Screw head must be a minimum of 8mm in Diameter]
- Sub-FrameWork is to be provided by a minimum thickness 0.75mm G550 Battens spaced in accordance with the Summermore Design Tables. Fixing of the Sub-FrameWork Battens to the SubStructure is to be designed for by others.



A. Typical fixing detail

- Alu Selekt facade profiles
- 8-18x16 Metal Self Tapping Screw
- Cover profile.

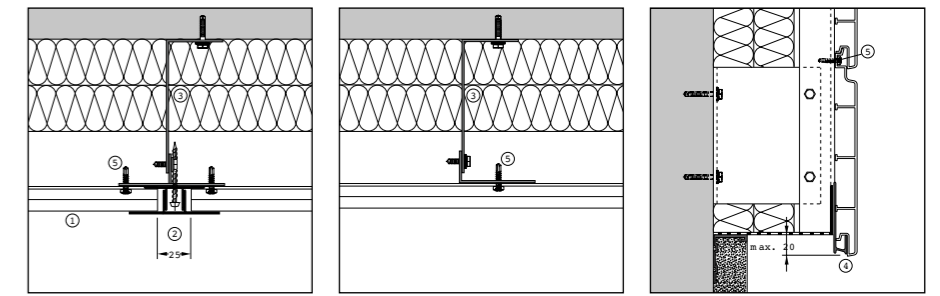


B. Typical joiner detail

Please Note:
Refer to Generic Structural Design Certificate (available on our website)

Horizontal installation

- Alu Selekt facade profiles
- Cover profile
- Sub-framework
- Horizontal Starter profile
- 8-18x16 Metal Self Tapping Screw
- Top hat section n
- Drive Pin
- Internal/external corner profile.

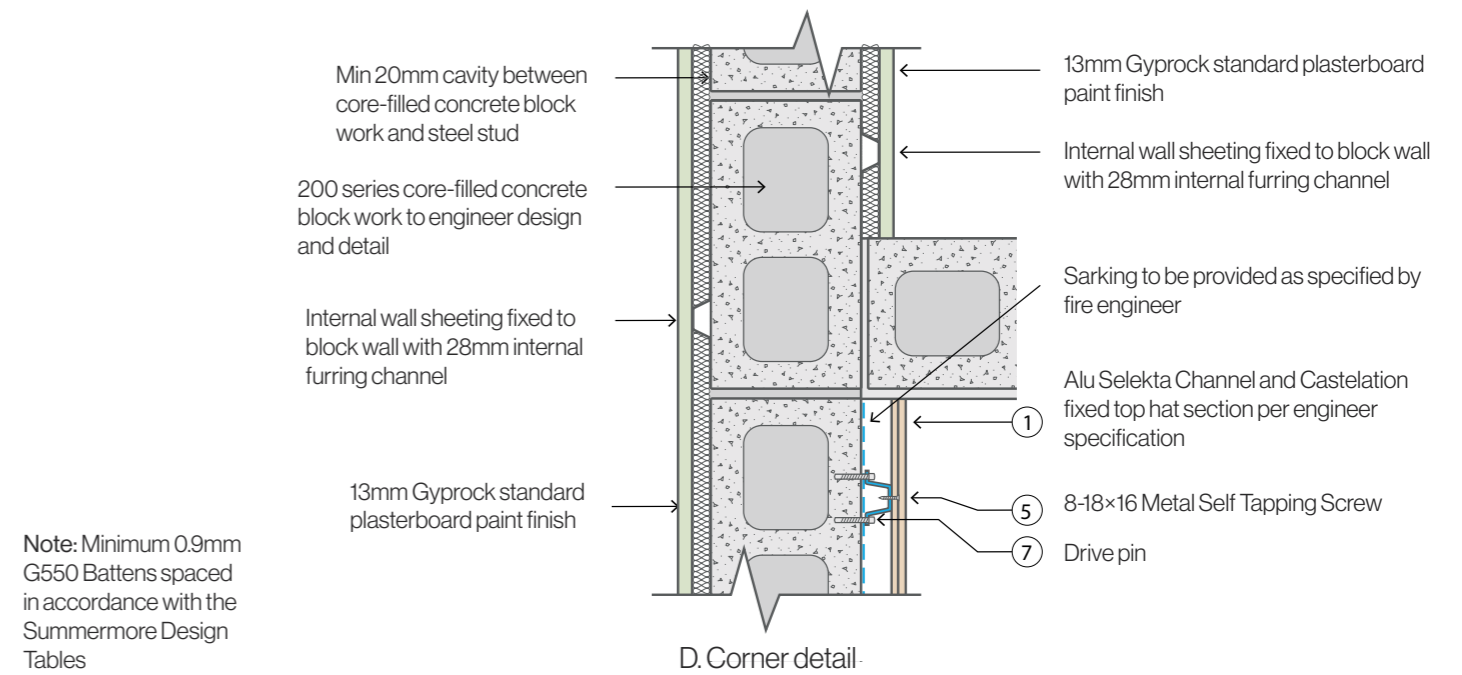


A. Joiner detail

B. Fixing detail

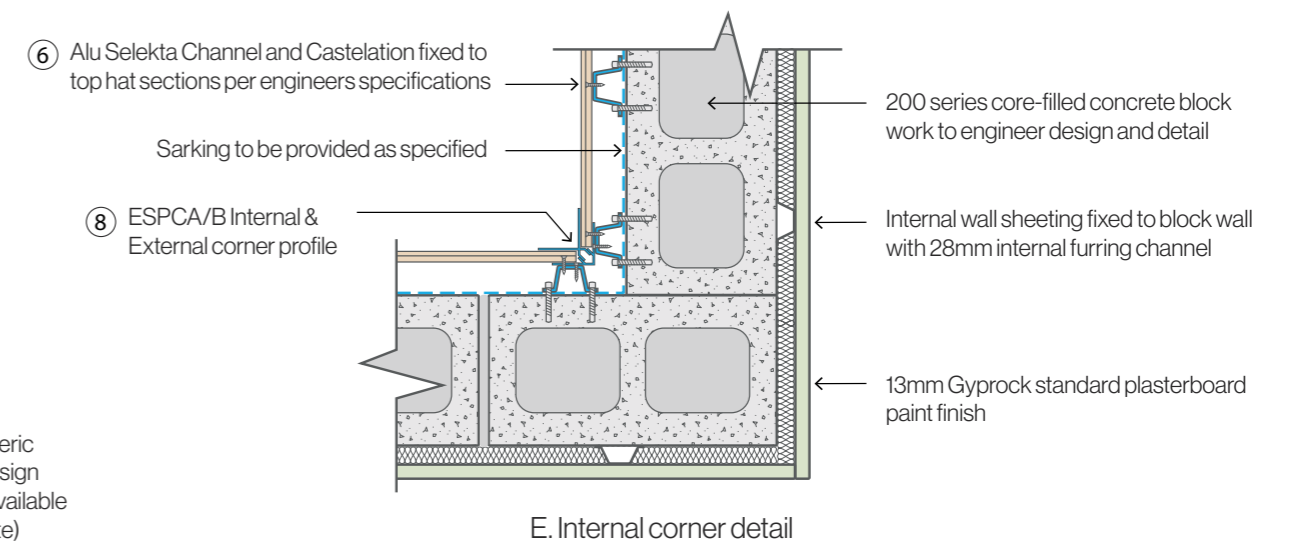
C. Vertical junction

Details are for light-weight construction techniques.



Note: Minimum 0.9mm G550 Battens spaced in accordance with the Summermore Design Tables

D. Corner detail

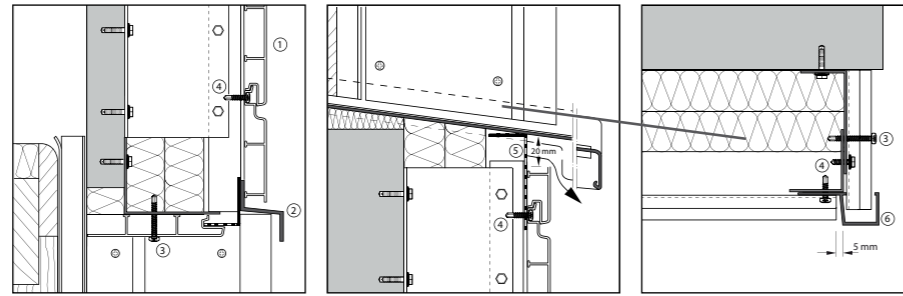


Please Note:
Refer to Generic Structural Design Certificate (available on our website)

E. Internal corner detail

Horizontal installation

- Alu Selekt a façade profiles
- Z profile
- 8-18x16 Metal Self Tapping Screw
- 8-18x16 Metal Self Tapping Screw
- Ventilation pro file 30/90
- Connection pro file F
- ESA 4 Ox 20 L-profile
- ESECB External c orner box profile
- Top hat section
- Drive Pin
- Starter profile - horizontal.



A. Junction detail

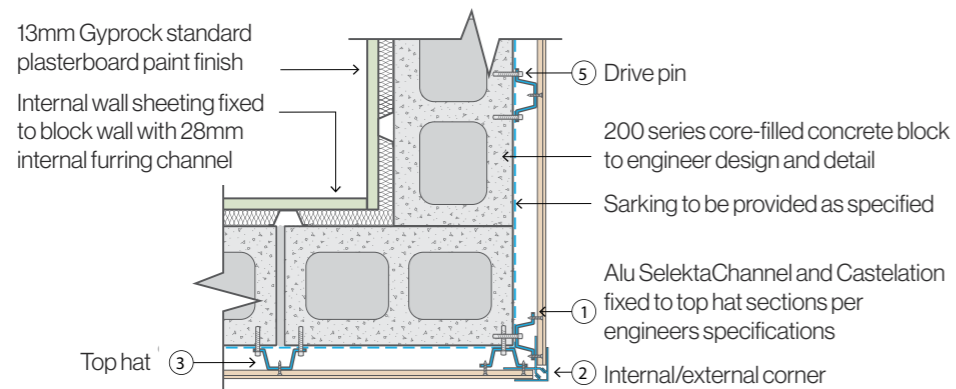
B. Window detail

C. Soffit detail

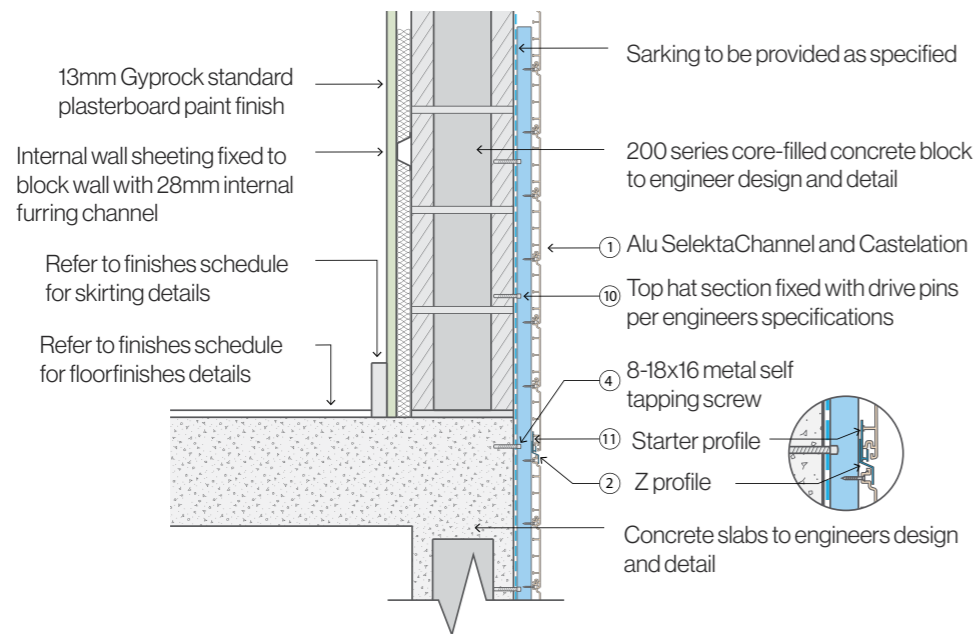
Details are for light-weight construction techniques.

Horizontal installation

- Alu Selekt a
- Internal /ext ernal corner profile
- Top hat section
- 8-18x16 Metal Self Tapping Screw
- Drive Pin

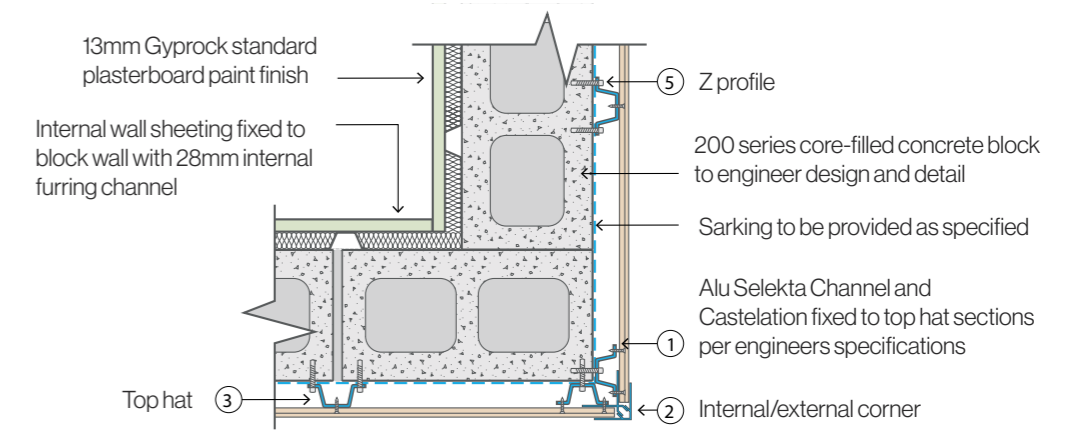


D. Light weight construction facade to soffit detail

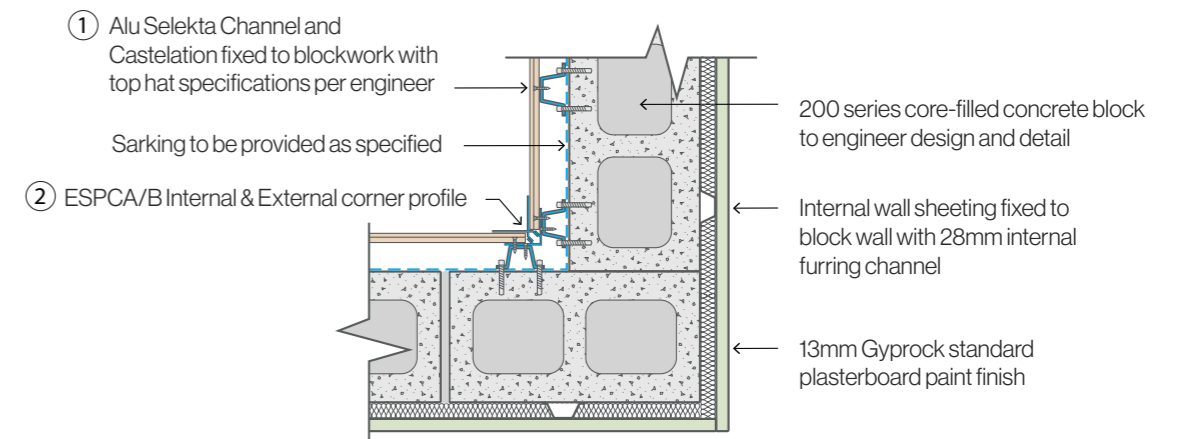


E. Starter detail

PleaseNote:
Refer to Generic
Structural Design
Certificate (available
on our website)



A. External corner details - masonry wall

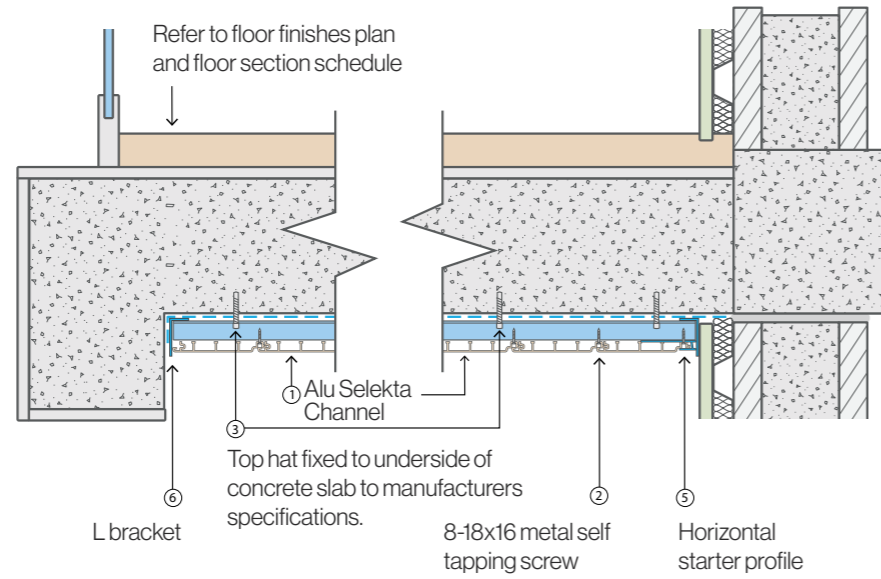


B. Alternative internal corner detail - masonry wall

PleaseNote:
Refer to Generic
Structural Design
Certificate (available
on our website)

Soffit installation

- Alu Selekt facade profiles
- 8-18x16 Metal Self Tapping Screw
- Sub-framework, spacing approx. 625 mm, structural analysis to be performed by the customer
- 8-18x16 Metal Self Tapping Screw
- Starter profile
- Lbracket.

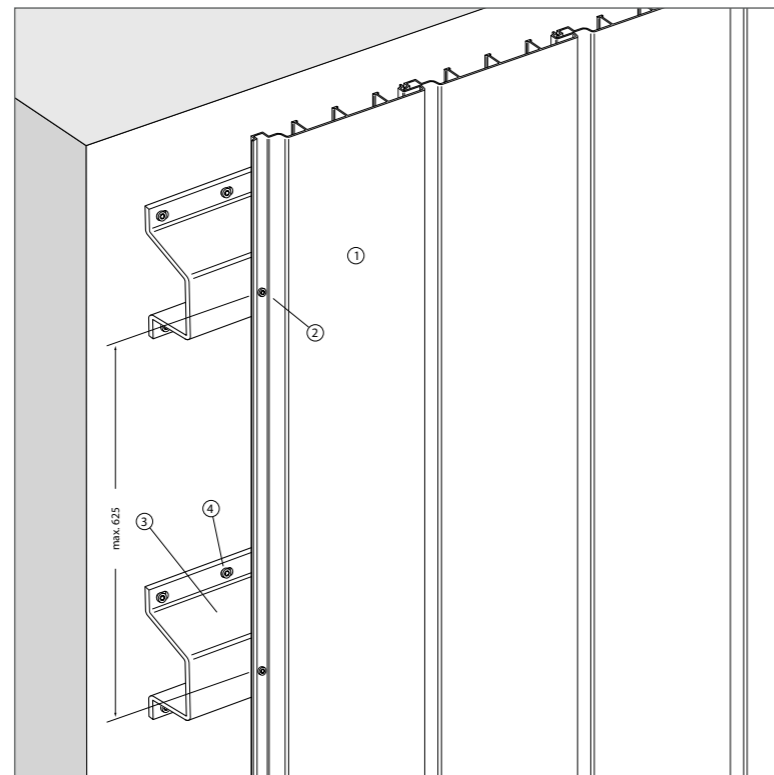


A. Soffit installation detail

Important building design notes:
Designed with positive interlock so planks are self-supporting, as fixed into position in ceiling spaces.

Vertical installation

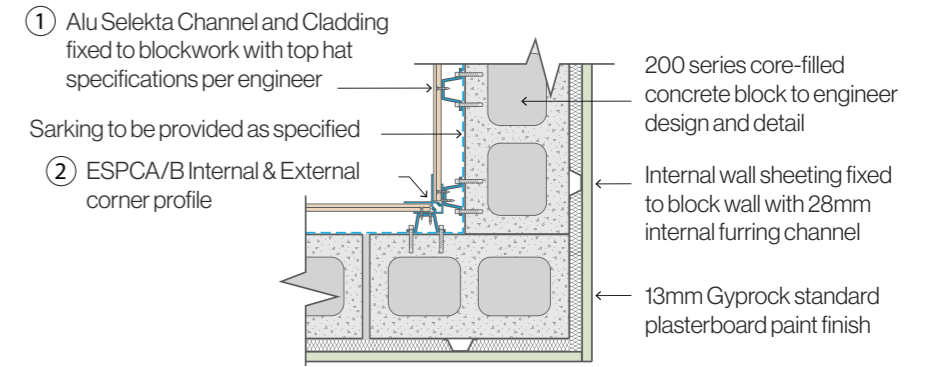
- Alu Selekt facade profiles
- 8-18x16 Metal Self Tapping Screw
- Sub-framework, spacing approx. 625 mm, structural analysis to be performed by the customer
- Drive Pin.



B. Vertical installation detail

Vertical installation

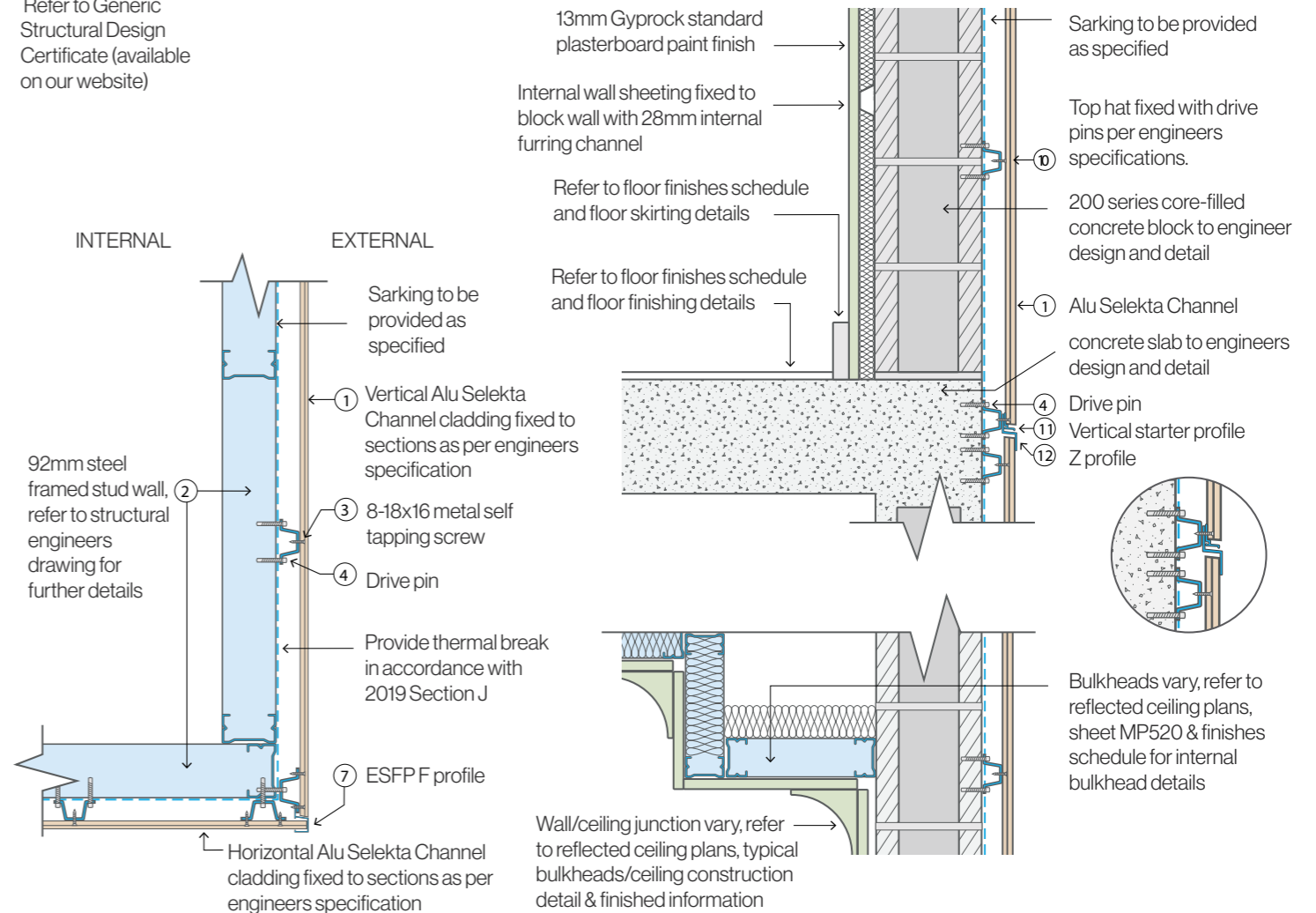
- Alu Selekt facade profiles
- Sub-framework
- 8-18x16 Metal Self Tapping Screw
- Drive Pin
- Aluminum external corner profile
- Aluminum internal corner profile
- F profile
- Top Hat Section
- Vertical starter profile
- Z profile



A. Alternative internal corner detail - masonry wall

Alternative details utilising light-weight construction techniques.

Please Note:
Refer to Generic Structural Design Certificate (available on our website)

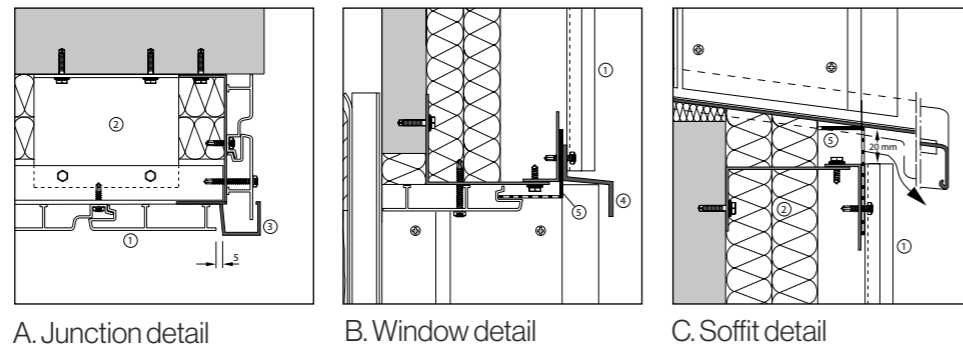


B. Light weight corner detail

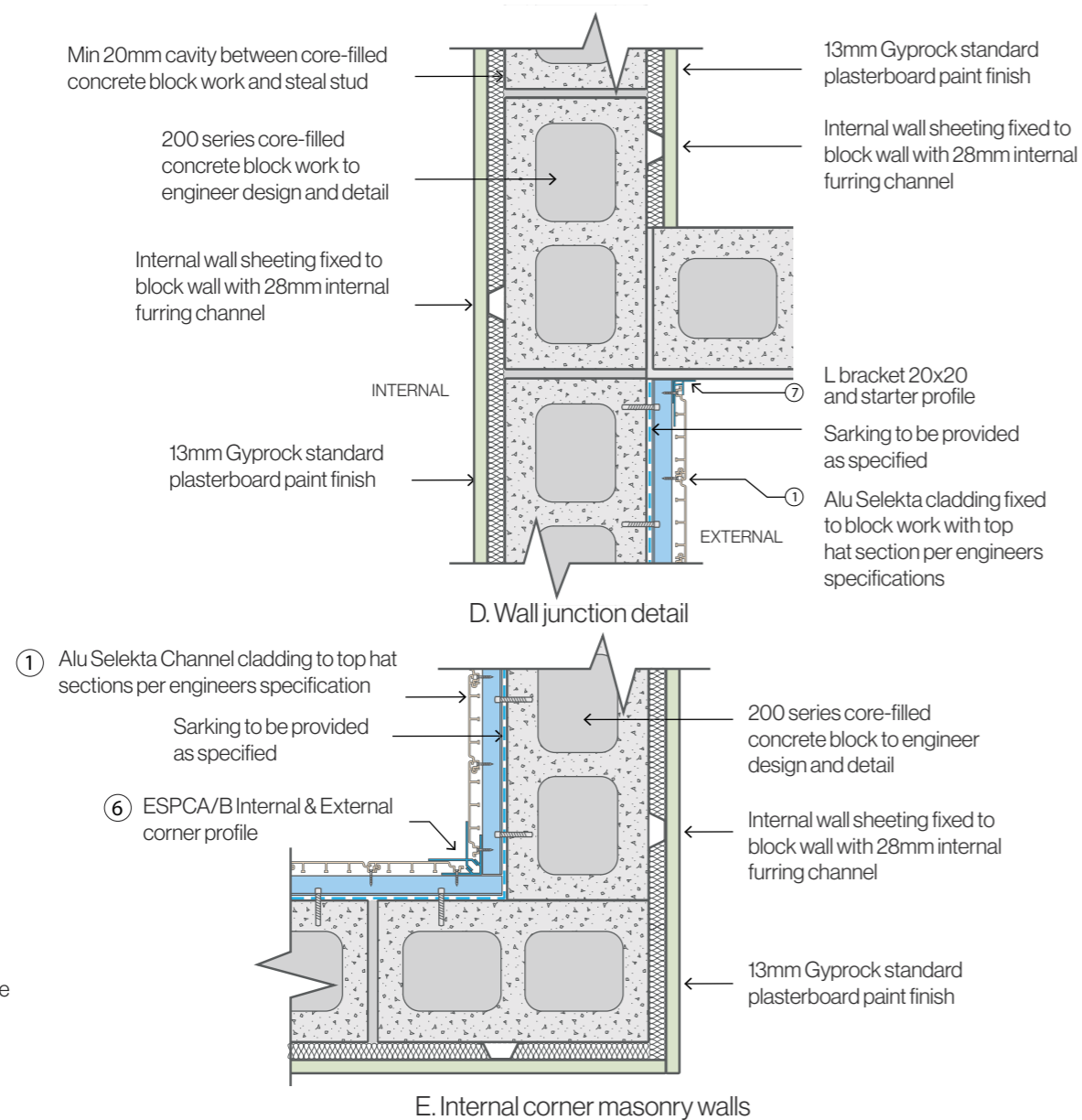
C. External masonry wall detail

Vertical installation

- Alu Selekt facade profiles
- Sub-framework
- Connection profile F
- Z profile
- Ventilation profile 30/90
- Internal/external corner profile
- L bracket 20x20 fixed to Alu Selekt Channel with 8-18x16 Metal Self Tapping Screw.



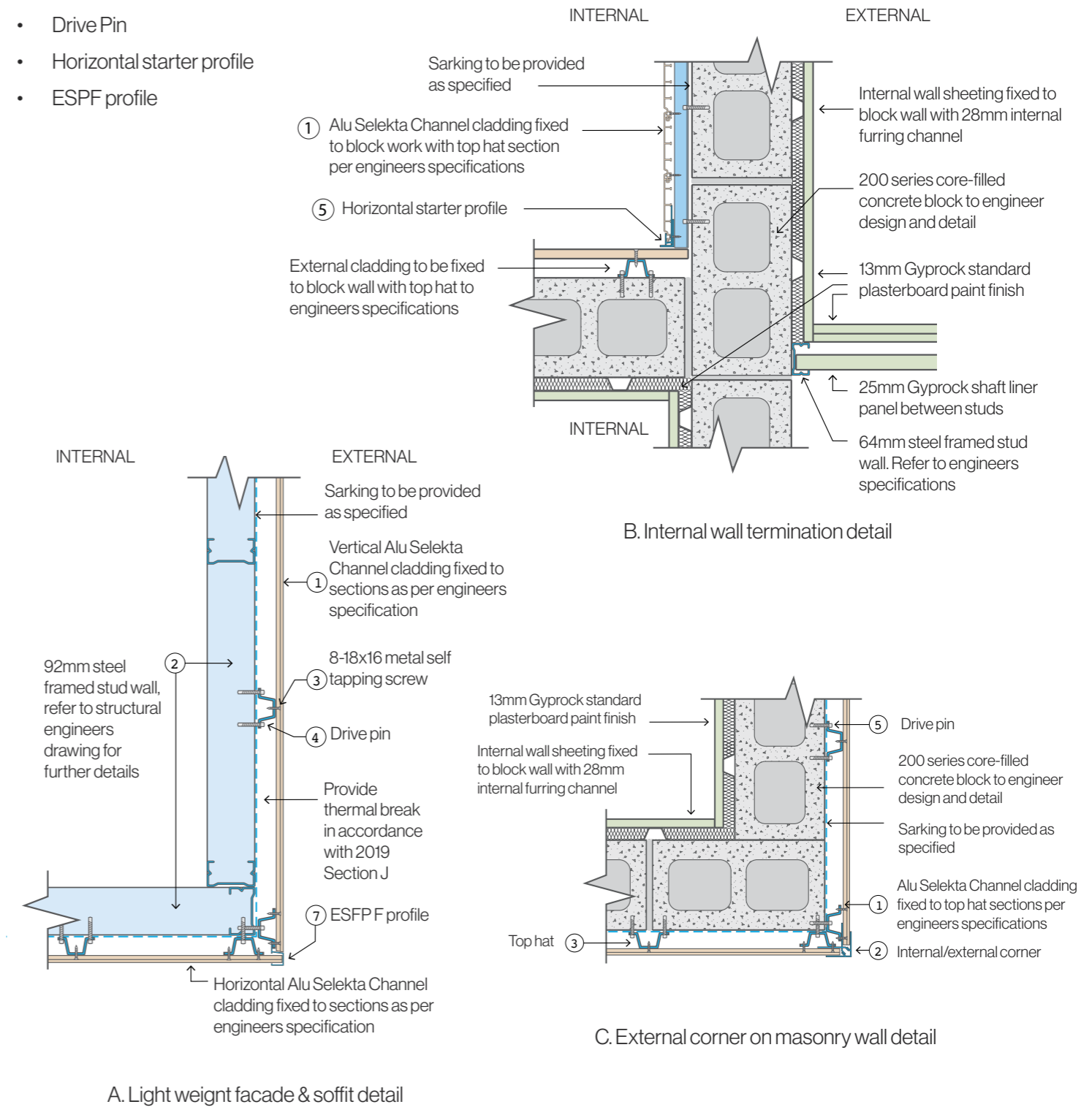
Alternative details utilising light-weight construction techniques.



Please Note:
Refer to Generic Structural Design Certificate (available on our website)

Vertical installation

- Alu Selekt facade profiles
- Sub-framework
- 8-18x16 Metal Self Tapping Screw
- Drive Pin
- Horizontal starter profile
- ESPF profile



General guidelines

Handling

The Alu Selekt Channel profiles must be stored in their packaging, lying flat until use.

Sawing with power tools

Aluminium saw blade must be used to cut profile.

Fastening the façade profiles

Suggest 8-18x16 Metal Self Tapping Screw [Screw head must be a minimum of 8mm in Diameter] or equivalent. Pre-drill Ø 0.4mm holes. Centre the fastening screws onto the screen recess grooves. To fasten efficiently, the screw head rests against the surface.

Fastening of all connection profiles

Suggest 8-18x16 Metal Self Tapping Screw [Screw head must be a minimum of 8mm in diameter].

Please Note:

Contact your structural engineer for further compliance with your project wind load and terrain category requirements.

Generic Structural Design Certificate:

Battens spaced in accordance with the Summermore Design Tables. Fixing of the Sub-Framework Battens to the SubStructure is to be designed for by others.

Sub-framework

Facade profiles are typically fastened to a galvanised mild steel structural sub-frame. In principle, the following guidelines should be followed:

- a. Compliance to Australian & NZ Building Codes is essential.
- b. Fixing of the Sub-Framework Battens to the Sub-Structure is to be designed for by others.
- c. The support battens must be fastened as per Australian Building Codes. The support battens must be fastened as per Australian Building Codes and in accordance with Design Advice by Others.

- d. The sub-framework must be level and plumb.
- e. Sub-Framework is to be provided by a minimum thickness 0.9mm G550 Battens spaced in

Cut edges

Cut edges with a sharp aluminium saw blade. In coastal regions [up to approximately 50 km inland], all cut edges must be protected against corrosion. Paint ends if required.

Expansion

8-18x16 Metal Self Tapping Screw clearance allowed for in profile.

The length change of the façade profiles is approximately 1 mm/linear m, for a 40°C temperature differential. Expansion joints of 5 mm must be maintained at profile butt joints and profile connections.

Maintenance

On an annual basis use a soft sponge of cloth, hose with water and mild detergent, non-abrasive soap with the pH range of 5-9 to clean the powder coated area of dirt, grime and other debris. Pressure washing and the use of harsh detergents or chemicals is not recommended. Include in your maintenance records the following: date, time, specific products used, name of maintenance person and their designation, maintenance company name and general condition of the powder coated finish.

If you have additional questions, please contact Modinex Architectural - 1800 156 455. Subject to changes due to technical improvements.

