



Product Showcase

## Shiplap Cladding



Perfect lines as far as  
the eye can see

Our Shiplap boards are profiled to produce an overlap, which allows for a continuous cladding look and uninterrupted, clean lines. Shiplap timber cladding provides a modern and clean cedar finish that adds a touch of cladding class to any internal or external shiplap application.



## Continuous cladding

Modinex timber lining boards can be used in both vertical and horizontal applications; including timber ceiling lining boards and cedar wall lining panels. The natural wood grain provides a warm, natural ambience that will always be appreciated.

## Features and Benefits

Sustainable timber — Available in a range of sustainably certified timber species

Certification — PEFC and FSC certified species are available

Fire rating — Group 3 (Group 1 if Fireshield is applied) for internal applications, and up to BAL29 for external applications

Easy to install — Concealed fixings for a refined design for ease of installation

Seamless design — Specially designed interlocking tongue allows for secret fixing

Design — Available in random or set length options

Pre-finished coatings available — Available in a range of standard colours

Application — Options available for external and out of weather applications

# How to specify

Download REVIT files, installation instructions, product care and technical information at [modinex.com.au](https://modinex.com.au)



## Choose your shape

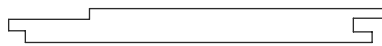
PROFILE CODE	DIMENSION
PR-SLI-82X9	82mmW x 9mmD
PR-SLS-82X12	82mmW x 12mmD
PR-SLM-82X15	82mmW x 15mmD
PR-SLE-82X18	82mmW x 18mmD
PR-SLI-133X9	133mmW x 9mmD
PR-SLS-133X12	133mmW x 12mmD
PR-SLM-133X15	133mmW x 15mmD
PR-SLE-133X18	133mmW x 18mmD
PR-SLE-181X18	181mmW x 18mmD

## Profiles



82mm wide

9mm, 12mm, 15mm and 18mm thickness available



133mm wide

9mm, 12mm, 15mm and 18mm thickness available



181mm wide

18mm thickness available



## Choose your finish

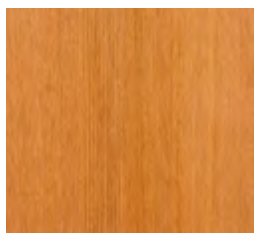
See Modinex website for full range of colour and coating options.

# Timber Species

All our ranges of timber species are available in set length and random length. Please contact our projects team for more information.

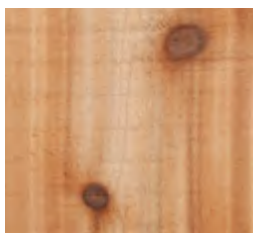
## — SOFTWOOD

Western Red Cedar, Alaskan Cedar & Hemlock are the only suitable species for 9mm thick profiles. All Softwood species can be used for 12mm thickness or greater. For external applications, please use 18mm thick profiles or greater.



Western Red Cedar

Plantation  
100% PEFC Certified  
Greentag Certified



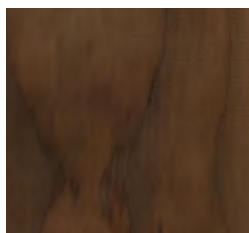
Western Red Cedar - Tight Knot

Plantation  
100% PEFC Certified



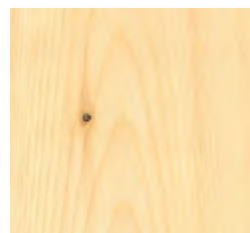
Hemlock

Plantation  
100% PEFC Certified  
Suitable for indoor and  
out-of weather use only



Hemlock - Thermally Modified

Plantation  
100% PEFC Certified



Alaskan Cedar

Plantation  
100% PEFC Certified



Accoya

Plantation  
100% PEFC Certified

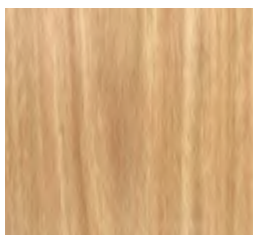
## — HARDWOOD

Hardwood species can be used for 15mm thickness or greater for out of weather applications and 18mm thickness or greater for external use.



American Oak

PEFC Certification is available



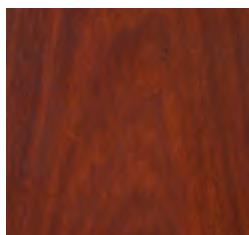
Blackbutt

FSC Certification is available



Spotted Gum

FSC Certification is available



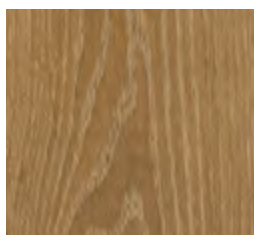
Ironbark

FSC Certification is available



Southern Spotted

PEFC Certification is available



French Oak

PEFC Certification is available



# Timber Finishes

Through our bespoke in-house manufacturing capabilities, our collection of standard finishes can be customised to meet your design intent. Below is an example of our range of timber finishes available.



Circular Sawn



Band Sawn



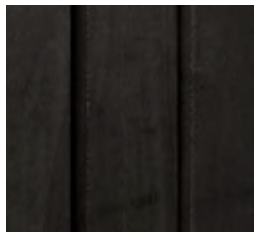
Shot Blasted



Wire Brushed



Two Tone



Charred - Shou Sugi Ban



Dressed

# Timber Coatings

Modinex offers a range of standard and custom coating to meet our client's design requirements, whilst offering the best protection to our beautiful timber collections. All our coatings at Modinex are ultra-low VOC or VOC-free coatings. Please note some profiles are not available in all timber species.

## Penetrating Oil Coatings

Penetrating oils can be used for both internal and external conditions. These oils penetrate the cellular structure of the timber giving it greater protection against UV and weathering. If you are looking for a natural Patina finish, we can apply our Mist or Patina coatings to achieve a natural from installation. Penetrating oil achieve a natural matt finish.



Suitable for external conditions

## UV Catalysed Coatings

UV catalysed coatings offer excellent surface projection to timber whilst being free of solvents and VOC free. UV coatings are available in matt or satin finish in a range of stain colours. UV coatings are one of the most sustainable and environmentally friendly coatings.



Suitable for out-of-weather use only

## Acid Catalysed Coatings

Acid catalysed coatings are commonly used for clear finishes in a matt or satin finish. These coatings are extremely hard-wearing.



Suitable for out-of-weather use only

## Custom Coatings

If one of our standard stain colours does not meet your design requirements, we can apply a custom coating in which we can colour match any colour.



Suitable for out-of-weather use only

For further information on our range of coatings and colour please contact our projects team [hello@modinex.com.au](mailto:hello@modinex.com.au) . A range of our finishes are a combination of both Acid Catalysed and UV Catalysed coating technology.



Create stunning wow factor  
with flexibility of style, texture,  
colour, shape and species.

Talk with our design team today about how to maximise the grandeur of your space. Our extensive product range puts a wealth of inspiration at your fingertips. We can even collaborate with you to innovate custom solutions, specifically designed to bring your vision to life and elevate your space with exclusive designer appeal.

 **Modinex**

Let us help you specify your next project

Contact P—1800 156 455 E—hello@modinex.com.au

**Learn more**

Inspiration and product downloads  
available at [modinex.com.au](https://www.modinex.com.au)

