



ARCHITECTURAL
HAVENS

by Modinex

NO.3



ARCHITECTURAL
HAVENS

by Modinex

NO.3



Introduction

Welcome to the third edition of Architectural Havens, a quarterly celebration of Australian Architecture, Design and Construction.

We surround ourselves with architecture that emulates the ideals we hold close and connects us further with nature and the built environment surrounding us. From Always House perched above the beach on Victoria's Mornington Peninsular to a Driftwood House in Noosa Heads, each featured project within these pages reflects its own distinct style, guiding philosophy, and unwavering devotion to the abundant diversity and awe-inspiring splendour that Australians are fortunate to call their own.

A harmonious blend of elegance, intellect, and sustainability courses through their walls, embodying the pinnacle of Australian design innovation. These projects are the culmination of inspired collaborations among owners, architects, and construction experts, all driven by a shared dedication to creating architectural statements unlike any other.

It is with great pride that we share with you these projects which include interior and exterior architectural elements.

As you turn these pages, we invite you to immerse yourself into our world of design and you will be inspired by its power to shape the world we live in.





The Quay

NOOSA WATERS, QLD

Sculpting form and function.

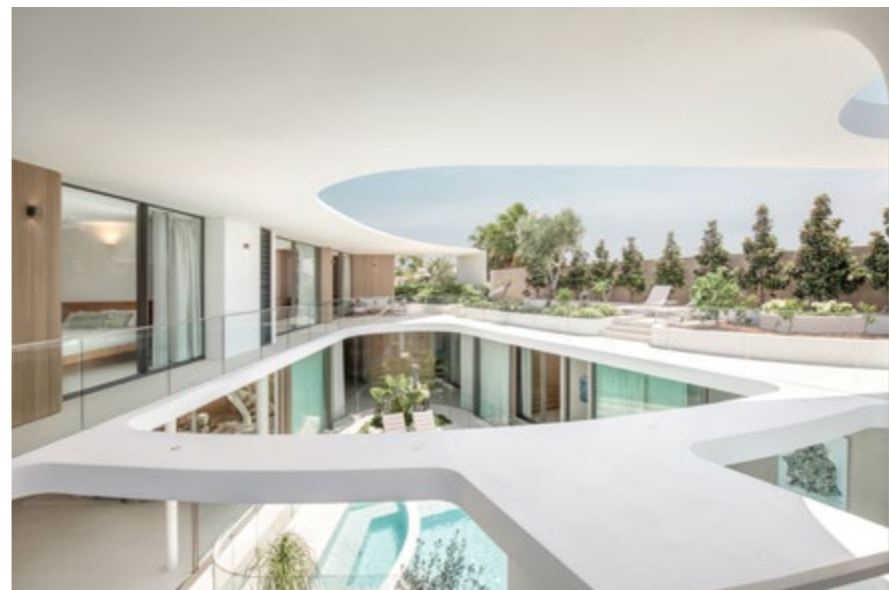
The Quay at Noosa Waters is a tangible sculpture where daily discoveries of intricate details enhance the residences' connection with their living space.

A home that demonstrates how your dreams can become a reality while exercising design restraint for a unique and timeless outcome. This waterfront home provides complete privacy with the capability to open entirely to the adjoining waterway and to the natural beauty of its surroundings. A careful selection of natural materials and furnishings compliment the organic design to result in a creative outcome with strong presence and timeless sophistication.

The initial brief for a five-bedroom family home with maximised canal views crafted Gerard Smith's inspiration for the strategic placement of living spaces and the incorporation of privacy screens to maintain a balance of light, breeze and privacy.

The exterior's sculptural form resembles a delightful and functional art piece while the interplay of light and shadow within the abode, combined with captivating, modelled forms, offers an ever-changing, immersive experience for the occupants.

Gerard Smith Design unveils a team of designers who view each project as an opportunity to blend functionality with natural artistic expression. Through The Nest and The Quay projects, Gerard Smith's passion for beautifully designed spaces becomes palpable, leaving a lasting impression on the landscape of Australian luxury residential architecture.



SCREENCLAD THERMALLY MODIFIED HEMLOCK,
SCREENCLAD HEMLOCK AND BATTENS THERMALLY MODIFIED HEMLOCK

Middle Dural House

MIDDLE DURAL, NSW

The Middle Dural House is a contour hugging, escarpment augmentation.

Contemporary peaks and colonnades, nestled within a comprehensive landscape.

Designed by award-winning architect Andrew Donaldson, constructed by prestigious Mallinger Constructions, and landscaped by Rolling Stone Landscapes, this residence harmoniously combines luxury and functionality.

The 6 contemporary barn-archetypes either slip past, or launch perpendicular to the programme stacked gallery walk, offering nuance in view, maximum northern light through the gable ends, or glass flanking walls of each form, bringing the ancient landscape deep inside every space.





NEWPORT CHARRED CLADDING - SHOU SUGI BAN



Coorabell Springs Residence

COORABELL SPRINGS, NSW

Modern architecture meets hinterland hideaway.

Coorabell Springs is a beautiful estate nestled on the edge of Wilson's River, situated in the Northern Rivers district of New South Wales, Australia. The vision was a residence that complimented the neighbouring regenerative bushland and natural spring found on the property.

The design of Coorabell Springs Residence prioritises sustainability and environmental impact, integrating seamlessly into its picturesque site. The passive design approach supports daily living through the use of sustainable black timber cladding, polished concrete, and timber batten cladding, harmonizing with the rolling hills, on four acres of land, and natural spring-fed dam. The black timber cladding was primarily chosen for its sustainability, as well as its low maintenance and non-toxic properties.

The modest-sized home focuses on dual-aspect living to enhance sunlight and crossflow ventilation, while maintaining a separation between east-facing living areas and the private bedroom wing for added solitude.

Sustainability features include a slab-on-ground foundation, which helps maintain stable internal temperatures. Designed to evolve with the surrounding garden, the residence exudes timeless elegance and aims to provide serene seclusion for years to come. The result is a home of refined simplicity that will gracefully blend into the landscape as the garden matures.



SCREENCLAD HEMLOCK MOCHA TWOTONE

Beelarong Street Residence

MORNINGSIDE, QLD

Simple elegance of Shou Sugi Ban.

This property is a showcase of lifestyle architecture, ideally situated within walking distance of Brisbane City.

Featuring authentic Shou Sugi Ban cladding, Beelarong Street Residence is a prime example of sustainable and biophilic design. Elevated above the natural landscape of the Brisbane River, this architectural marvel embraces passive design principles.

The use of natural, authentic finishes throughout creates a profound sense of connection to nature, seamlessly blending the home with its landscape.





NEWPORT CHANNEL CHARRED - SHOU SUGI BAN



Modern Thai Residence

NOOSA HEADS, QLD

Where sweeping softness mirrors coastal harmony.

Modern Thai Residence, aligned with the water's edge, draws inspiration from the ebb and flow of the ocean.

A collaboration between CLO Studios and Chris Clout Design, showcases a carefully chosen colour palette, natural elements, and sweeping curves to create an elevated and refined contemporary residence.

Natural ventilation and solar gains, infuse the various zones with warmth, while the earthy-tone palette and timber accents create a dynamic, boutique luxury ambiance. Anchored by the water, the linear plan offers sweeping views, embracing indoor-outdoor living with integrated terraces. Transparent screening enhances openness, directing views towards the water while maintaining separation from the streetscape.

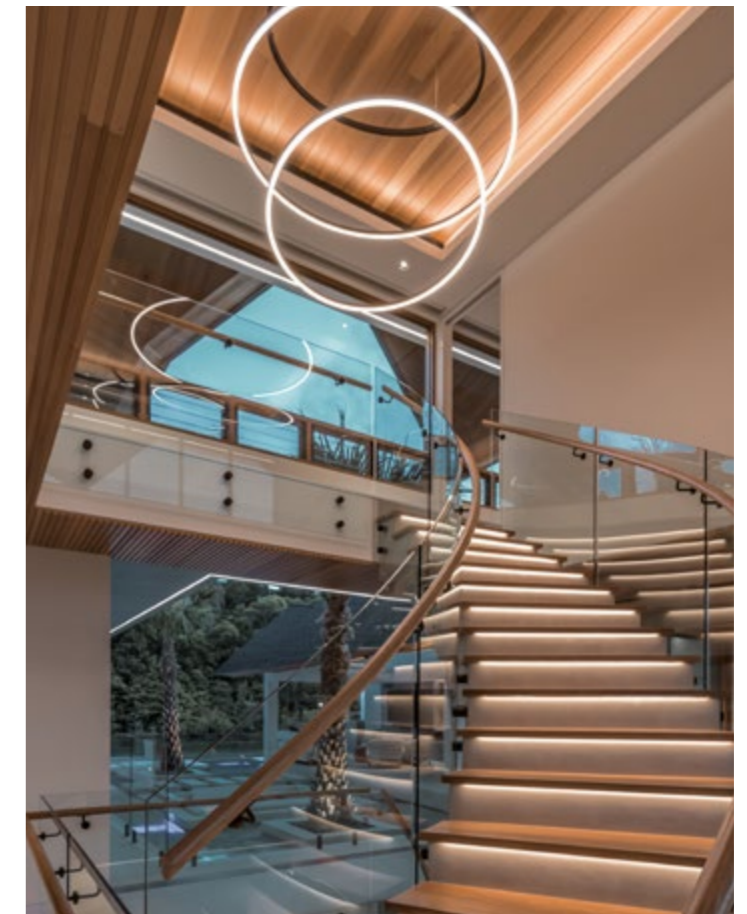
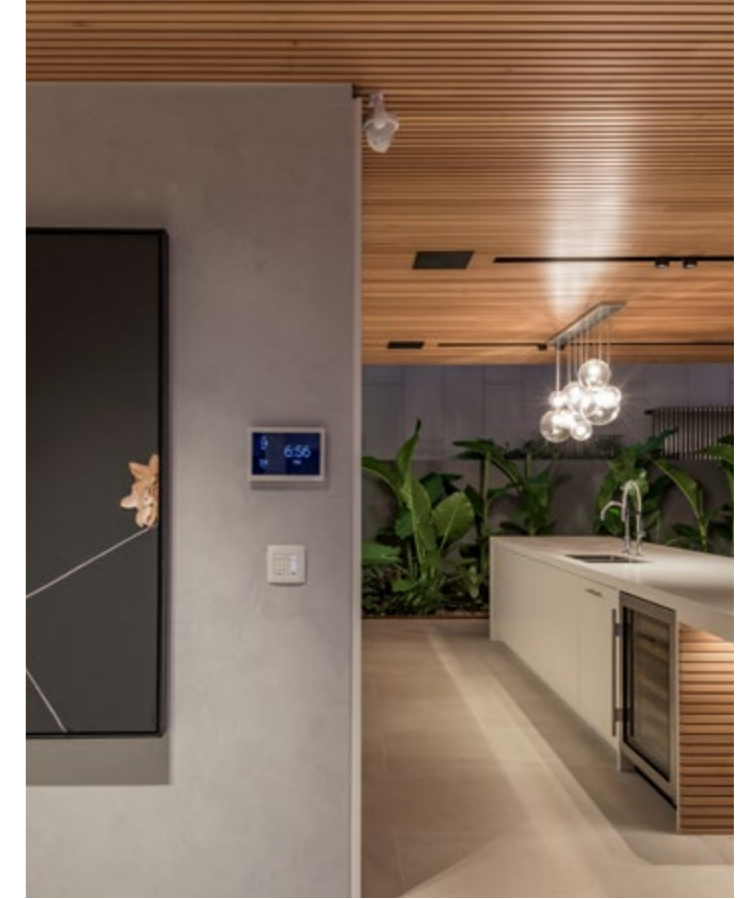
DESIGNED BY | CHRIS CLOUT DESIGN

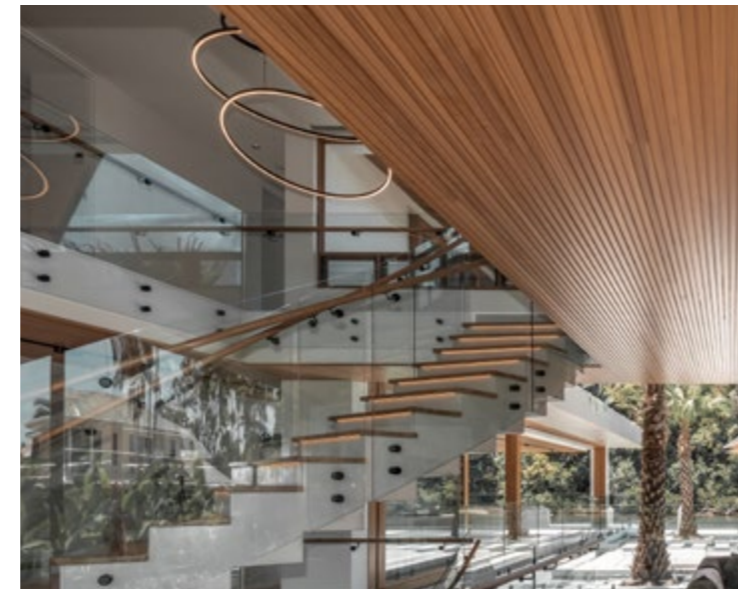




Balancing daily functions, creating a sense of respite and connection to the natural environment.

Terracotta and apricot tones from a soft materiality base, complemented by carefully selected furniture, light, and artwork, all contributing to create a harmonious and calming residence.





VEE-JOINT WESTERN RED CEDAR
AND SCREENCLAD HEMLOCK



Always House

FLINDERS, VIC

Embodies coastal ease with resilient materials.

Perched above the beach on Victoria's Mornington Peninsula, this elegantly designed residence is deeply immersed in its rugged coastal setting, providing its owners with a serene escape from city life.

The material palette of this architectural design has been meticulously curated, featuring muted, earthy colours and deliberately omitting black and white. The design is grounded in natural materials with intrinsic or integrated finishes, including stone, timber, and cloth.

Blue-green slate tiles cover the floors, while blackbutt timber is used extensively, both internally and externally, on horizontal and vertical surfaces. Cedar battens accentuate the ceilings and joinery. The soft furnishings predominantly feature washed linen or similar materials, complemented by hand-woven rugs in muted, gentle tones that enhance the slate flooring.

Embracing its coastal setting, 'Always' unfolds over two levels with a detached guest suite. The ground floor, inspired by the original house form, presents a panoramic glazed facade along the beachside. The first floor, oriented differently, features a concrete-framed design with a seagrass planted roof.





WESTERN RED CEDAR





Stump Gully Residence

BALNARRING, VIC

Cozy Gully house immerses with surrounds of nature.

The design, responsive to solar orientation and nature elements, prioritizes timber and warm tones, creating a beautifully detailed residence. Nestled in Balnarring on Victoria's Mornington Peninsula.

Crafted through collaboration between Markowitz Design, Stravrias Architecture, and Bakker Constructions, this single-level home exemplifies deliberate modesty and harmonizes seamlessly with its surroundings. The design is thoughtfully responsive to solar orientation and natural elements, emphasizing timber and warm tones to create a beautifully detailed residence. Stump Gully Road is envisioned to accommodate evolving family needs, featuring flexible zoning and a conscientious alignment with the site.

The linear form of the home captures northern light for each room and is complemented by a curated garden designed by Jo Ferguson. Emphasizing natural elements, the entrance integrates seamlessly with the landscape, reflecting mid-century principles through a modern lens. Stump Gully Road stands as a lasting legacy, meticulously connecting its creators and occupants to the site and ensuring enduring relevance.



SHIPLAP WESTERN RED CEDAR





SHIPLAP WESTERN RED CEDAR



Wesley Court Residence

NOOSA HEADS, QLD

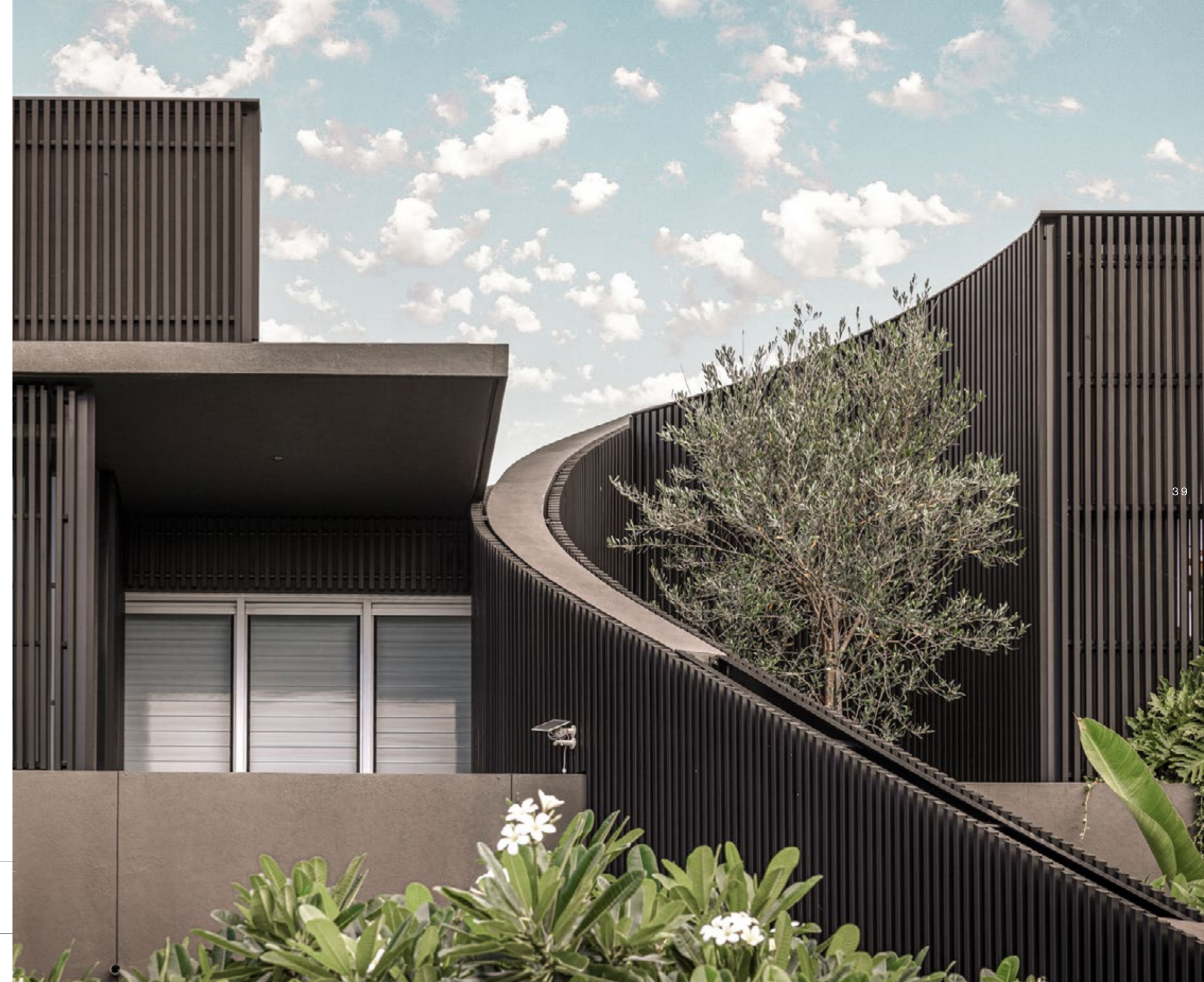
Coastal sophistication.

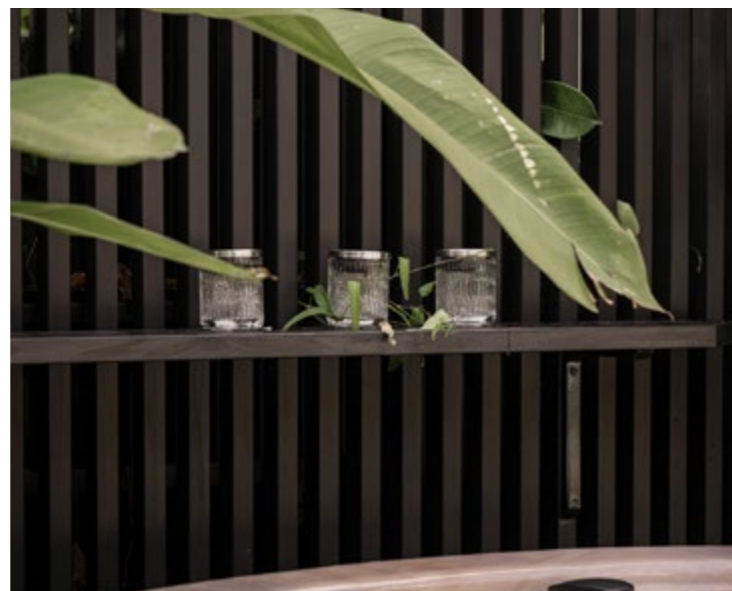
Hustled by gorgeous blue hues and sandy banks, presents a customized architectural masterpiece.

By the water's edge, the sweeping curves of this build harmoniously integrate with its intricate architectural details.

Designed by Frank Macchia, the Austratus clip-in batten system features a painted finish that introduces an array of linear details while providing acoustic noise absorption internally.

Custom screens facilitate natural ventilation and diffuse light, creating a sense of privacy while embracing the surrounding natural elements.





AUSTRATUS FIN ALASKAN CEDAR WITH COATING AND
CASTELLATION ALASKAN CEDAR WITH COATING







Casa Avalon Residence

MYOCUM, NSW

Nurtured in nature.

A place created for those seeking a peaceful atmosphere between nature, high-end design, and just moments away from sun-drenched beaches.

Casa Avalon sounds like a dream! The blend of modern design with natural materials and the seamless indoor-outdoor living makes for the perfect getaway.

The combination of French Oak floors, an open fireplace, and Spotted Gum cladding creates a warm, inviting atmosphere. The spacious pergola and large glass windows allow for embracing both sunrise views and the surrounding rural

beauty. Along with that, being nestled between Brunswick Heads and Mullumbimby offers the best of both worlds; tranquil countryside and charming coastal towns.



NEWPORT CENTURY CLADDING SPOTTED GUM AND PENCIL ROUND DECKING SPOTTED GUM



Byron Bay Residence

BYRON BAY, NSW

Masterpiece in Prized Wategos Byron Bay.

Immerse yourself in a life of luxury, leisure and an exclusive enclave of the renowned Wategos. This show-stopping sanctuary exudes architectural brilliance with no detail overlooked.

This project beautifully marries stunning stone elements with the warm allure of Spotted Gum timber, creating a sophisticated yet inviting space. The design not only grounds the home but also frames magnificent ocean and hinterland vistas, elevating the living experience. The open-plan layout is thoughtfully designed to maximise both natural light and the gentle sea breezes, offering a seamless connection to the serene environment. Positioned with the iconic Cape Byron Lighthouse as a backdrop, this home provides a tranquil escape from the everyday hustle and bustle.

Ideal for entertaining, the home features elegant areas for gathering, alongside a central living and dining space perfect for relaxation. The sleek, gourmet kitchen and BBQ zone are crafted to inspire culinary creativity, making it a dream space for home chefs and those who love to entertain.

ARCHITECTURE | HARLEY GRAHAM ARCHITECTS





NEWPORT CENTURY IN SPOTTED GUM





The Island House

SOUTH STRADBROKE ISLAND, QLD

Epitome of an island retreat.

Island elegance surrounded by nature.

The Island House is a masterful blend of raw, natural materials and thoughtful design, harmoniously integrating with its coastal environment and the Minjerribah landscape. The Charred timber cladding used externally, inspired by the traditional Shou Sugi Ban technique, not only enhances durability but also creates a striking visual dialogue with the surrounding landscape.

The house is designed into pavilions, each distinct yet interconnected, accommodating up to two families. This layout ensures both public and private areas are well-defined while offering flexibility and spaciousness. The carefully chosen materials used for the house such as the plywood

soffits that extend and the Guinea Rosewood window joinery, creates a seamless indoor-outdoor living space.

Strategically placed louvres are a key feature, enabling the house to effectively harness natural ventilation and maintain a comfortable internal climate.

Overall, The Island House exemplifies a sophisticated response to its environment, blending aesthetic appeal with functional design to create a serene and sustainable living space.



NEWPORT CHANNEL CHARRED - SHOU SUGI BAN





Terrace House

SUNSHINE BEACH, QLD

Coastal sophistication.

Harmonising luxury alongside coastal views.

The Terrace residence is a quintessential example of how architecture can harmonise with its environment while embracing a relaxed coastal lifestyle. Set on a modest, steep site just moments away from the beach, this home is designed to reflect the laid-back essence of Australian coastal living.

The residence is thoughtfully arranged across three levels. The lower two levels are dedicated to private spaces, including bedrooms, ensuring that personal areas remain serene and separate. The upper floor is reserved for the main living areas, providing a panoramic view of the wave breaks at Sunshine Beach and fostering an expansive indoor-outdoor living experience.

This design features white-washed Hemlock timber for ceilings & walls, introducing a touch of warmth and contrast against other robust, exposed finishes.





VEE-JOINT HEMLOCK IN WHITE WASH





Driftwood House

CASTAWAYS BEACH, QLD

Coastal essence & elevated simplicity.

Just moments from Sunshine Beach and Noosa Heads, this exceptional Castaway Beach home is defined by its seamless integration of light and landscape. The property showcases a series of breathtaking living spaces, all designed to maximize the stunning views and capture the essence of open, seaside living.

Known as Eagles Nest, this exclusive property is the private residence of renowned designer Chris Clout and has been masterfully crafted to capitalise on its breathtaking views of the ocean and Noosa Hinterland.

Nestled in a serene cul-de-sac facing northeast, the home benefits from 360-degree vistas, showcasing a harmonious blend of greens and blues, protected coastal vegetation, and stunning sunsets.

CLO Studios, in partnership with Chris Clout, has realised the vision for Eagles Nest; an exceptional property designed for relaxed family living and elegant social gatherings.

DESIGNER | CHRIS CLOUT DESIGN

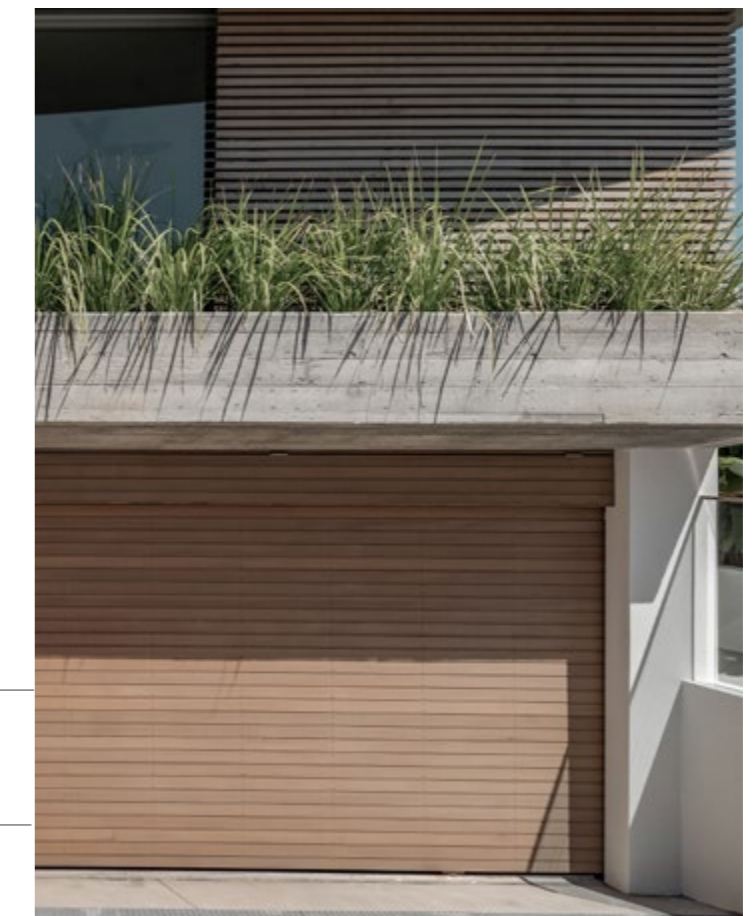




The expansive layout of Eagles Nest unfolds across three breathtaking levels, with convenient lift access ensuring seamless movement between floors. As well as walls of glass in nearly every room to amplify the stunning views.

The residence's design is meticulously planned: the top two outward-facing levels exude a penthouse-like ambiance, while the lower, inward-facing level offers a versatile, intimate atmosphere. This architectural marvel caters to a luxurious lifestyle with features including a pool, an entertaining terrace, mini-golf, a touch tennis court, and a 'man cave' basement. The basement is a haven of leisure, featuring a sauna, gym, cinema, and games room, all overlooking the pool.

VEE-JOINT IN WESTERN RED CEDAR AND
DRESSED ALL ROUND IN AMERICAN WHITE OAK





Kuroi Yoroi Residence

SURFERS PARADISE, NSW

Seamless fusion of Japanese and Balinese inspirations.

Nestled in the esteemed Gold Coast Isle of Capri, this dwelling redefines opulent living.

The interior exudes a sense of grandeur with its richly hued walls and ceilings, complemented by premium fixtures and fittings that enhance the living experience.

Environmental stewardship is a key feature of this design, incorporating solar panels and battery backup systems for renewable energy. Two electric car charger units further support eco-conscious living. The exterior is a striking blend of modernity and tradition, with tyrolean rendered brick walls and Shou Sugi Ban burnt timber cladding, merging Japanese and Balinese aesthetics seamlessly.

Alfresco living is a true delight, featuring expansive entertainment areas ideal for

gatherings or simply enjoying the outdoors. Contemporary aluminium screening enhances privacy, allowing residents to unwind in their own personal sanctuary.

A central canal, teeming with fish and surrounded by bonsai trees, creates a serene ambiance, while a spacious pontoon offers convenient access to the Gold Coast's picturesque waterways; perfect for boating enthusiasts.

This extraordinary residence epitomizes luxury, innovation, and sustainability, establishing a new benchmark for contemporary living with its unique cultural fusion, advanced technology, and meticulous craftsmanship.

DESIGNED BY | REECE KEIL DESIGN



CHANNEL CLADDING HEMLOCK





ARCHITECTURAL HAVENS by Modinex NO.3
PUBLISHED BY MODINEX
MODINEX.COM.AU | 1800 156 455

Architectural Havens is subject to copyright, and the contents may not be reproduced in whole or in part without permission from the publisher. Despite every effort being made to ensure that the information contained in this publication is accurate at the time of going to print, the publisher accepts no liability for any errors or omissions or the consequences of any reliance upon these.

